



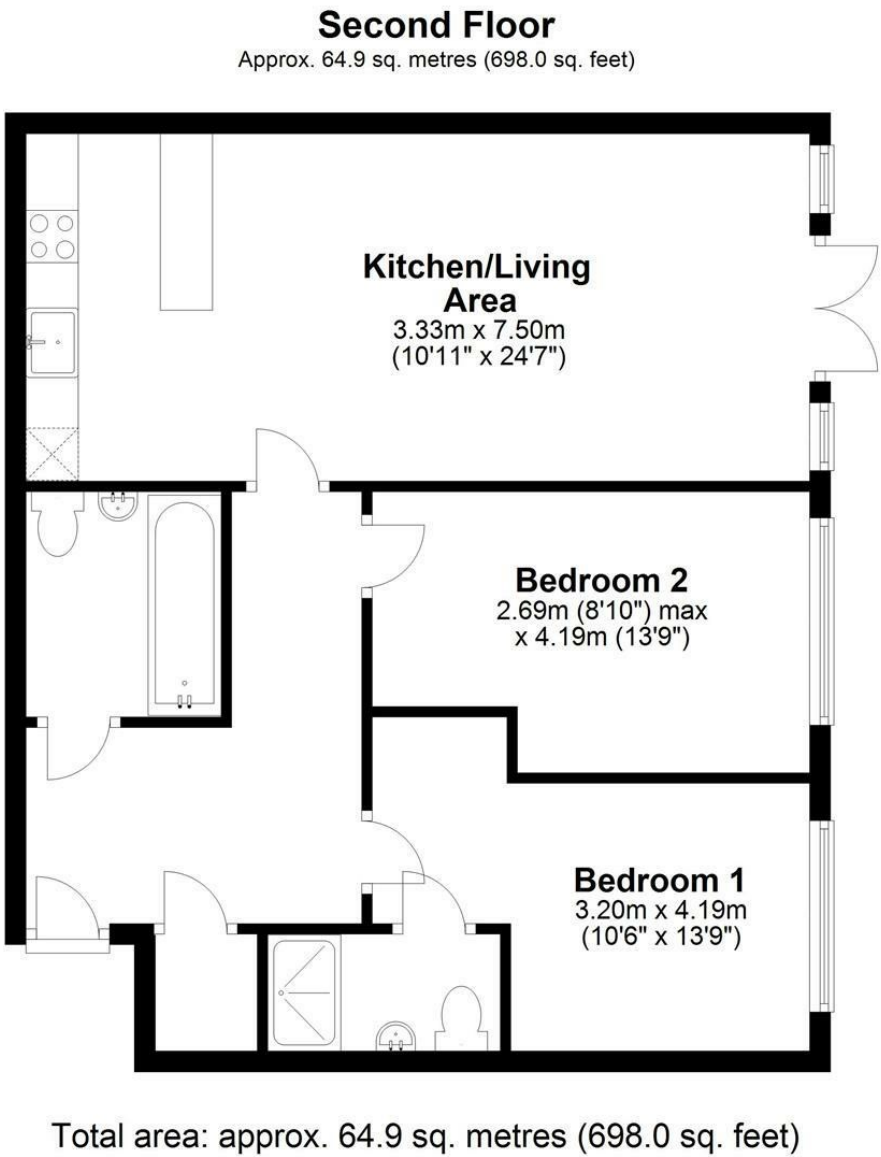
Burlington House, 2 Park Lodge Avenue, West Drayton,

- Parkwest
- Ensuite
- Concierge service
- EPC Rating- C
- Two bedrooms
- Residents Gym
- Popular location
- Available November

£1,650 PCM

Description

A two bedroom, two bathroom second apartment set in beautifully landscaped grounds. Benefits include double glazing, balcony, wood flooring, fully fitted custom designed kitchen, 24 hour concierge service, gymnasium and lift access to all floors. The accommodation consists of two double bedroom, two bathrooms (master with en suite) a fully fitted kitchen with appliances and a lounge with doors onto the balcony. Available October and presented part furnished.



IMPORTANT NOTICE

These particulars have been prepared upon information supplied by the Vendor and should be verified by your surveyors and solicitors. We have prepared these sales particulars as a general guide to give a broad description of the property. They are not intended to constitute part of an offer or contract. We have not carried out a structural survey and the services, appliances and specific fittings have not been tested. All photographs, measurements, floor plans and distances referred to are given as a guide only and should not be relied upon for the purchase of carpets or any other fixtures or fittings. Lease details service charge and ground rent (where applicable) are given as a guide only and should be checked and confirmed by your solicitor prior to exchange of contracts